

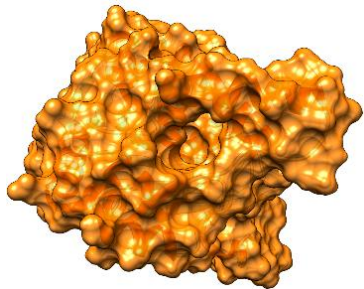
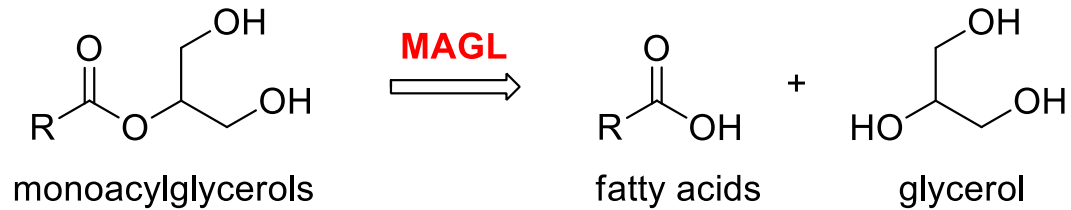
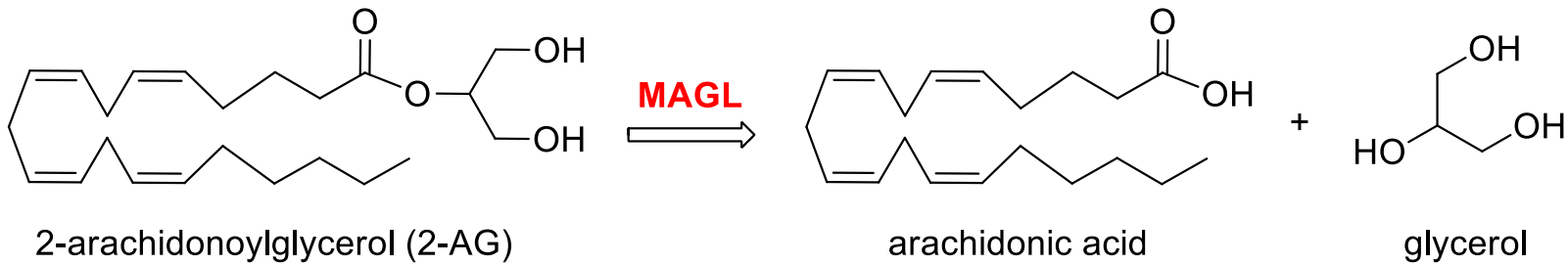
Studio della tossicità e valutazione farmacocinetica e farmacodinamica di potenziali agenti antitumorali nell'animale

Prof.ssa Carlotta Granchi

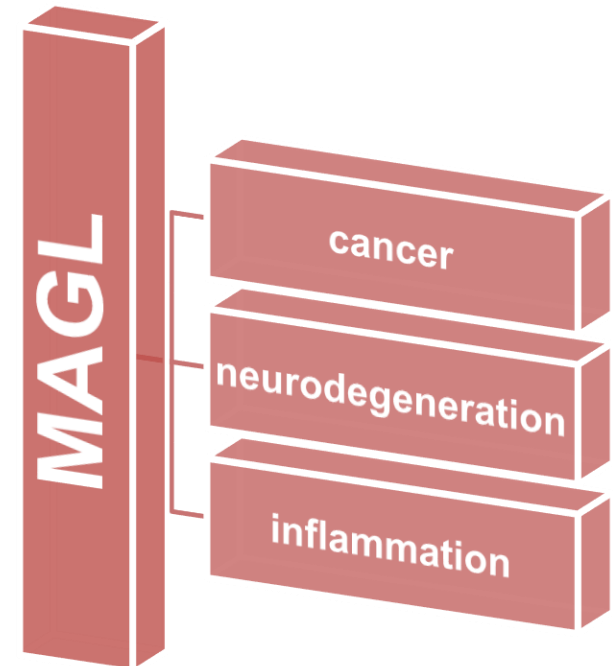
Dipartimento di Farmacia

Cosa facciamo noi...

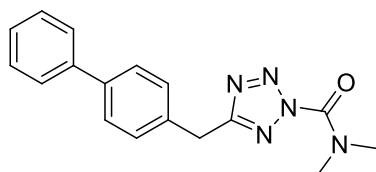
Endocannabinoid system



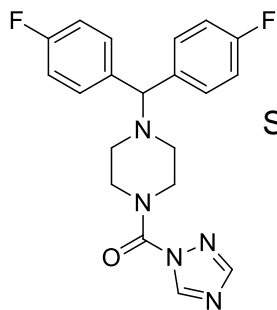
monoacylglycerol lipase (MAGL)



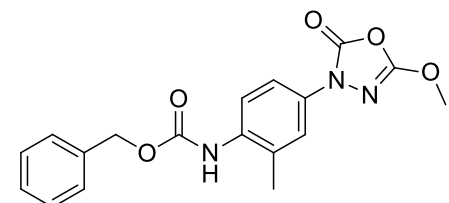
Inibitori dell'enzima MAGL



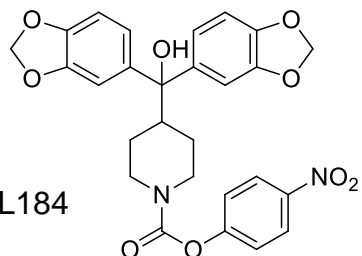
AM6701



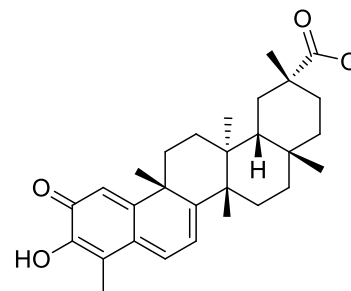
SAR629



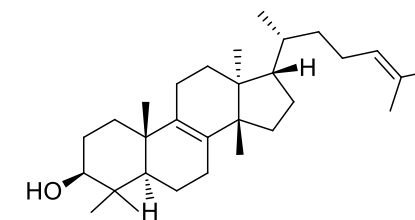
CAY10499



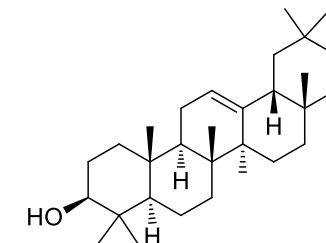
JZL184



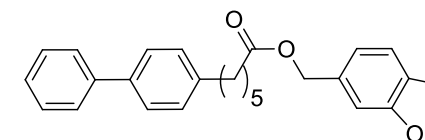
pristimerin



euphol



β -amyrin



compound 21

IRREVERSIBLE MAGL INHIBITORS

- High potency
- Loss of effects after chronic treatment
- Physical dependence

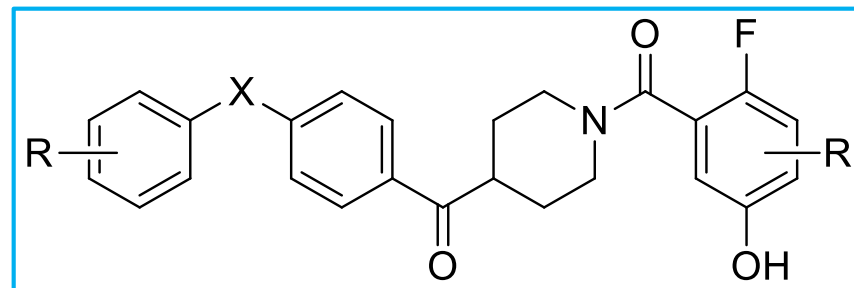
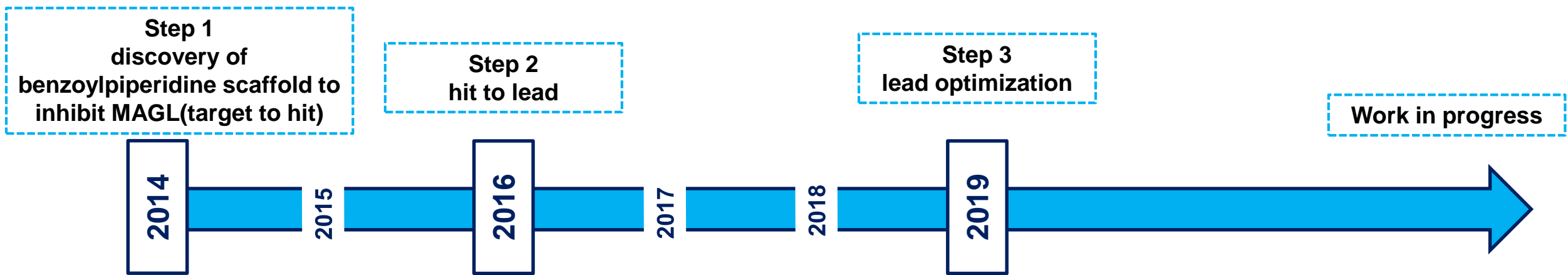
REVERSIBLE MAGL INHIBITORS

- Low potency
- Low selectivity (other biological targets)



Need of reversible MAGL inhibitors

Benzoylpiperidine compounds



Acknowledgments

Dipartimento di Farmacia, University of Pisa

Filippo Minutolo
Tiziano Tuccinardi
Marco Macchia
Adriano Martinelli
Giulio Poli
Giulia Bononi
Cristina Licari
Rebecca Ferrisi
Margherita Lapillo



UNIVERSITÀ DI PISA

Funding:

- University of Pisa (Progetti di Ricerca di Ateneo, PRA-2017-51 and PRA-2018-18)
- BioFuture Medicine srl Startup
- PRIN 2017 (2017SA5837)

Institute of Biochemistry and Molecular Medicine, NCCR TransCure, University of Bern, Switzerland

Andrea Chicca
Jürg Gertsch



Dipartimento di Scienze Molecolari e Nanosistemi, Università Ca' Foscari, Venezia

Flavio Rizzolio



Centro di Riferimento Oncologico (CRO), Aviano

Isabella Caligiuri



Istituto di Biostrutture e Bioimmagini-CNR, Napoli

Giuseppina De Simone
Simona Maria Monti

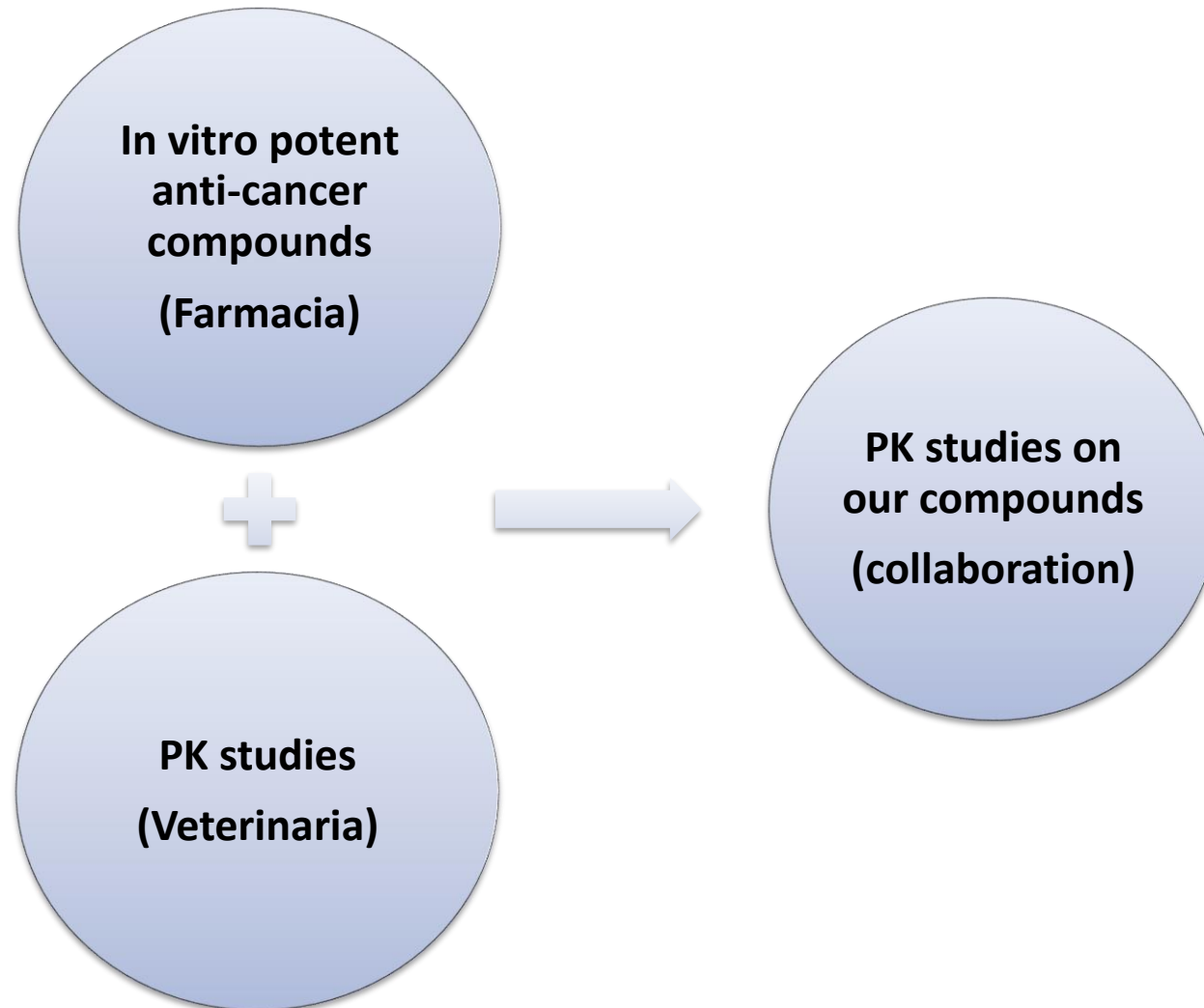


Istituto di Biostrutture e Bioimmagini

Ricerca di collaborazioni sul tema presentato

AREA 2: One medicine, il contributo della veterinaria

Studio delle patologie comuni tra uomo e animale



Ricerca di collaborazioni sul tema presentato

Drug development process

