

ADMISSIONS AND REQUIREMENTS

There are two different ways to enroll in the PhD programme:

Method A - Through a competitive application process

In order to apply, candidates must register online.

Method B - By supernumerary status (status 'soprannumerario') which applies to international candidates who have a scholarship from their own country. In order to apply, please send an email to the Director and the Secretary of the programme.

More details at:

<http://phd.unipi.it/howtoenrol>

<http://www.di.unipi.it/en/phd/phd-org/phd-admission>

Candidates will be selected based on an interview (possibly via teleconference), their CVs, academic transcripts, recommendation letters and any other relevant documentation provided. Every year, 10-15 students are admitted through **method A**. These students will be offered a scholarship covering university fees and a living allowance. Five of these students may be admitted without a scholarship. In general, five candidates are admitted via **method B**.

DEADLINES AND FEES

Method A - The deadline to register for the competitive application process is usually in September, and the fee is around € 60. Successful candidates who receive a grant only need to pay the Regional fee of € 140 per year. Those without a grant must pay both university and regional fees. More details at <http://phd.unipi.it/fees>

Method B - There are no deadlines to apply as a supernumerary candidate. Successful candidates only need to pay the Regional fee of € 140 per year.

Website

<http://www.di.unipi.it/en/phd>

Programme Director

Prof. Paolo Ferragina
paolo.ferragina@unipi.it

Secretary

General Information

Rosaria Mongini
rosie@di.unipi.it

Enrico Carpentras
enrico@di.unipi.it



Join us
STUDY IN
ITALY



CONTACT INFO:

rosie@di.unipi.it - enrico@di.unipi.it
+39 050 2212727 - +39 050 2213110

www.unipi.it



UNIVERSITÀ DI PISA

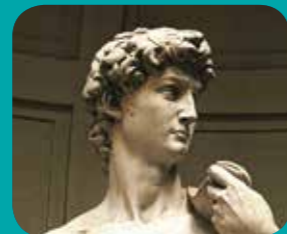
The University of Pisa (UNIFI) is a public institution composed of twenty departments, with high level research centres in the fields of agriculture, astrophysics, computer science, engineering, medicine and veterinary medicine.

Established in 1343, UNIFI is one of the most prestigious Italian higher education institutions and a modern centre for teaching and advanced research. One of the University's main strategies is that of internationalisation as it aims to engage with students and researchers and establish long-term partnerships with universities and public and private institutions from all over the world. With a current student population surpassing 54,000, UNIFI offers a large number of degree programmes held in English and a variety of exchange programmes.

Study at the Department of Computer Science and beyond

The PhD Programme is based mainly at the Department of Computer Science in Pisa, in collaboration with those in Florence and Siena.

These departments cooperate with various leading worldwide academic institutions and IT companies in many international research and educational projects. In addition, the city of Pisa is home to the major research institutes, of the Italian Research Council, that offer a wide range of scientific skills and expertise.



PROGRAMME OVERVIEW

This three-year PhD programme in Computer Science aims to educate flourishing researchers and innovators in the field of Information Technology.

Many of our alumni hold positions in the fields of academia and research throughout Italy and the rest of the world, such as leading roles in industries, private research companies, and in the public sector. The main expectation of our PhD students is to conduct research. Most classes are taught in English and held by top-ranking international scientists. Candidates without a formal education in Computer Science may be required to follow various preparatory classes during the first year. PhD students who are interested may have the opportunity to teach in undergraduate programmes.



COME AND THRIVE

- Work in a lively scientific environment
- Establish a network of contacts and partnerships worldwide
- Gain an in-depth and insightful education
- Enjoy a positive and friendly work environment
- Benefit from a multicultural experience

RESEARCH

Successful applicants are expected to conduct research in one of the departmental groups and in other institutions and research centres in Pisa that together cover almost all fields in Computer Science and many multi-disciplinary areas. PhD students will be able to benefit from and interact with the international research projects and cooperations that these groups are involved in (including the participation of students in joint PhD programmes).

Currently, around 50 domestic and international students are enrolled in the programme.