



**iv** In-vitro technologies  
**tech**

**Serena Giusti, R&D**

**info@ivtech.it**  
**www.ivtech.it**



**Eng. T. Sbrana**

PhD in Biomedical  
Engineering

CEO,  
co-founder



**Prof. A. Ahluwalia**

Professor of  
Bioengineering

Shareholder,  
co-founder



**Eng. G. Mattei**

PhD in Materials  
Chemistry

R&D Manager



**Eng. S. Giusti**

PhD in Biomedical  
Engineering

R&D Manager

**10 years of experience in design cell culture systems**



**Eng. T. Sbrana**

PhD in Biomedical  
Engineering

CEO,  
co-founder



**Prof. A. Ahluwalia**

Professor of  
Bioengineering

Shareholder,  
co-founder



**Eng. G. Mattei**

PhD in Materials  
Chemistry

R&D Manager



**Eng. S. Giusti**

PhD in Biomedical  
Engineering

R&D Manager

ADVISORY BOARD:

**Dr. E. Angione**

Founder of Win Medical  
Coach in Business  
Management

**Dr. M. Zanetti**

Graduated at Bocconi  
University  
Marketing & sales Manager



**Eng. T. Sbrana**

PhD in Biomedical  
Engineering

CEO,  
co-founder



**Prof. A. Ahluwalia**

Professor of  
Bioengineering

Shareholder,  
co-founder



**Eng. G. Mattei**

PhD in Materials  
Chemistry

R&D Manager



**Eng. S. Giusti**

PhD in Biomedical  
Engineering

R&D Manager

## Co-workers:

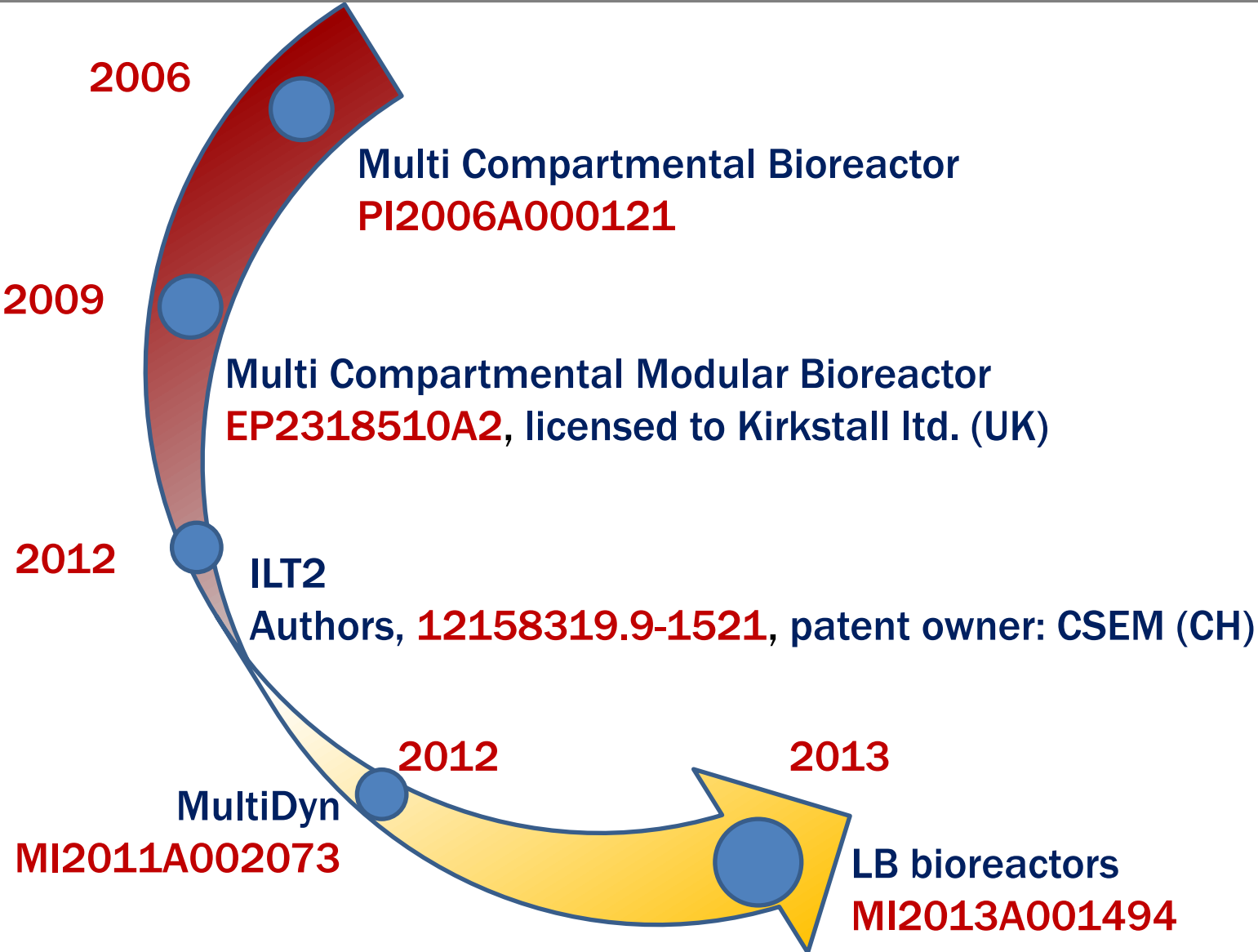
### MBA Team- Business analysis

**Dr. K. Sargsyan**  
**Dr. D. Carrara**  
**Dr. H. Dao Khahn**  
**Dr. Y. Martinucci**

### **Dr. D. Valenza**

Graduated at University of Palermo,  
Master in General Management

Marketing & sales activities



**“IVTech will provide customers that want to realize new and relevant in-vitro models with know-how and innovative systems.”**



**In-vitro tests**



**In-vivo tests**



**Clinical tests on humans**

1

2

3



## **In-vitro tests**

**230 MLN \$<sup>1</sup>**

**2-5 years**



## **In-vivo tests**

**335 MLN \$<sup>1</sup>**

**1-2 years**



## **Clinical tests on humans**

**467 MLN \$<sup>1</sup>**

**6-10 years**



Traditional In-Vitro Models	Live Box Kit
<b>Multiwell Plate:</b> <ul style="list-style-type: none"> <li>•2D</li> <li>•Single Culture</li> <li>•Static conditions</li> </ul>	<b>Bioreactor + Pump:</b> <ul style="list-style-type: none"> <li>•3D</li> <li>•Multi-Organ Model</li> <li>•Dynamic conditions</li> </ul>
Microscope	Motorized Objective
Incubator	Environmental Control



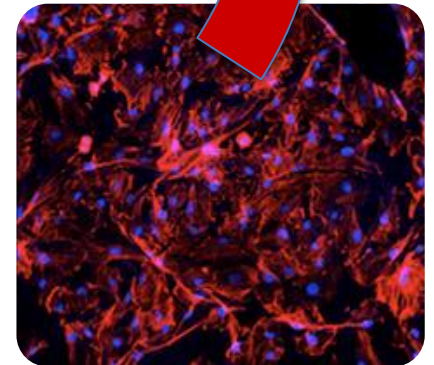
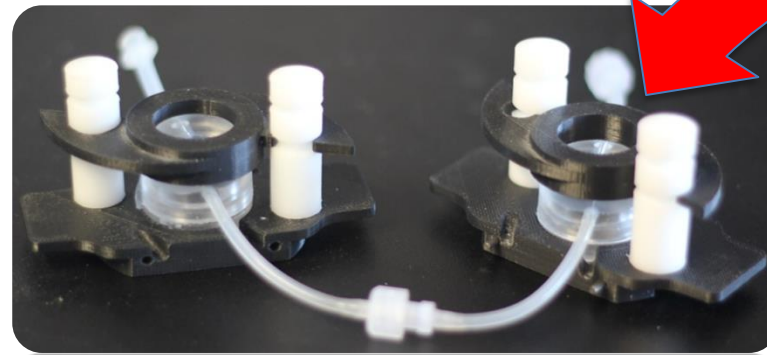
**Live Box 1**



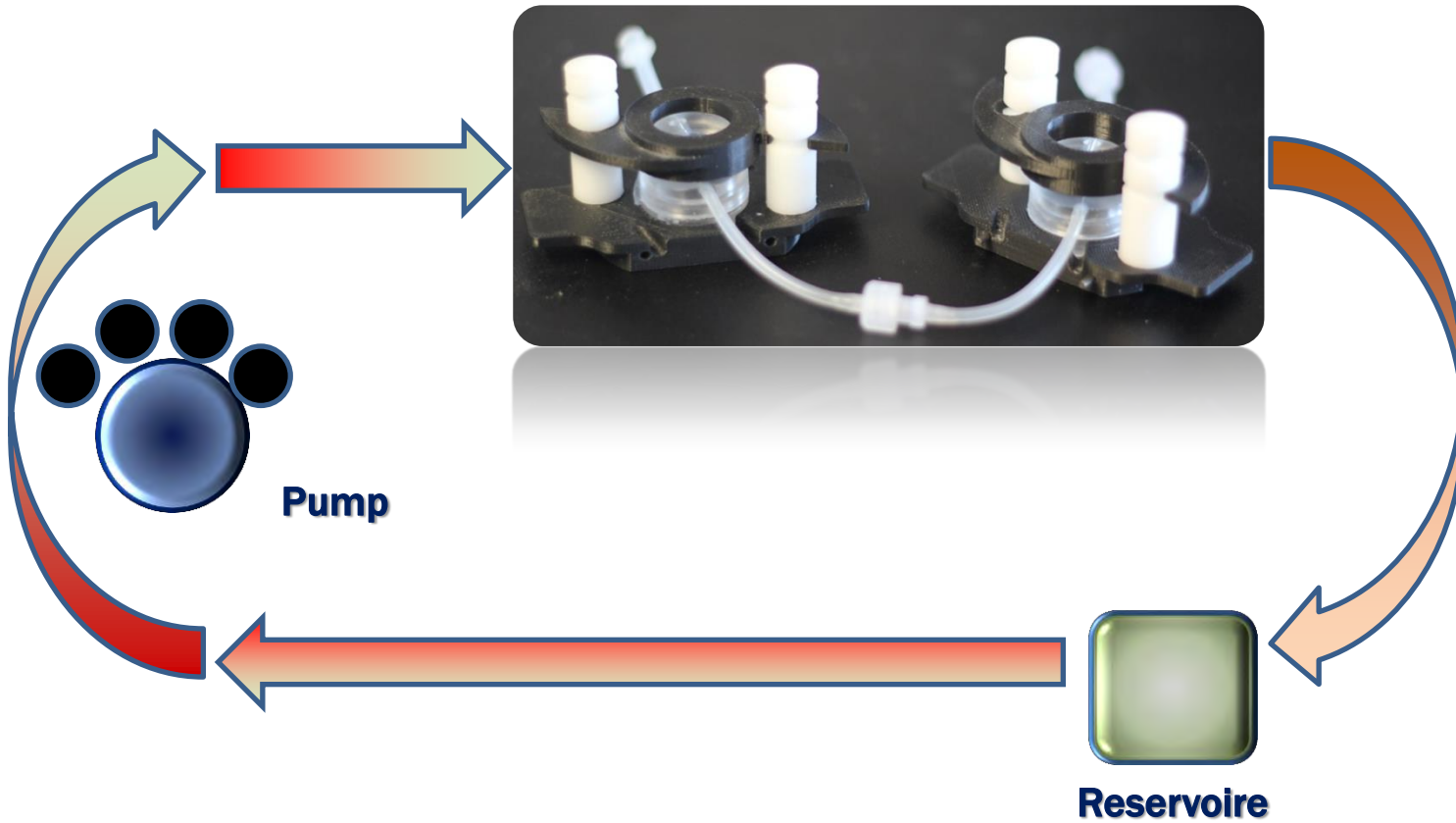
**Live Box 2**

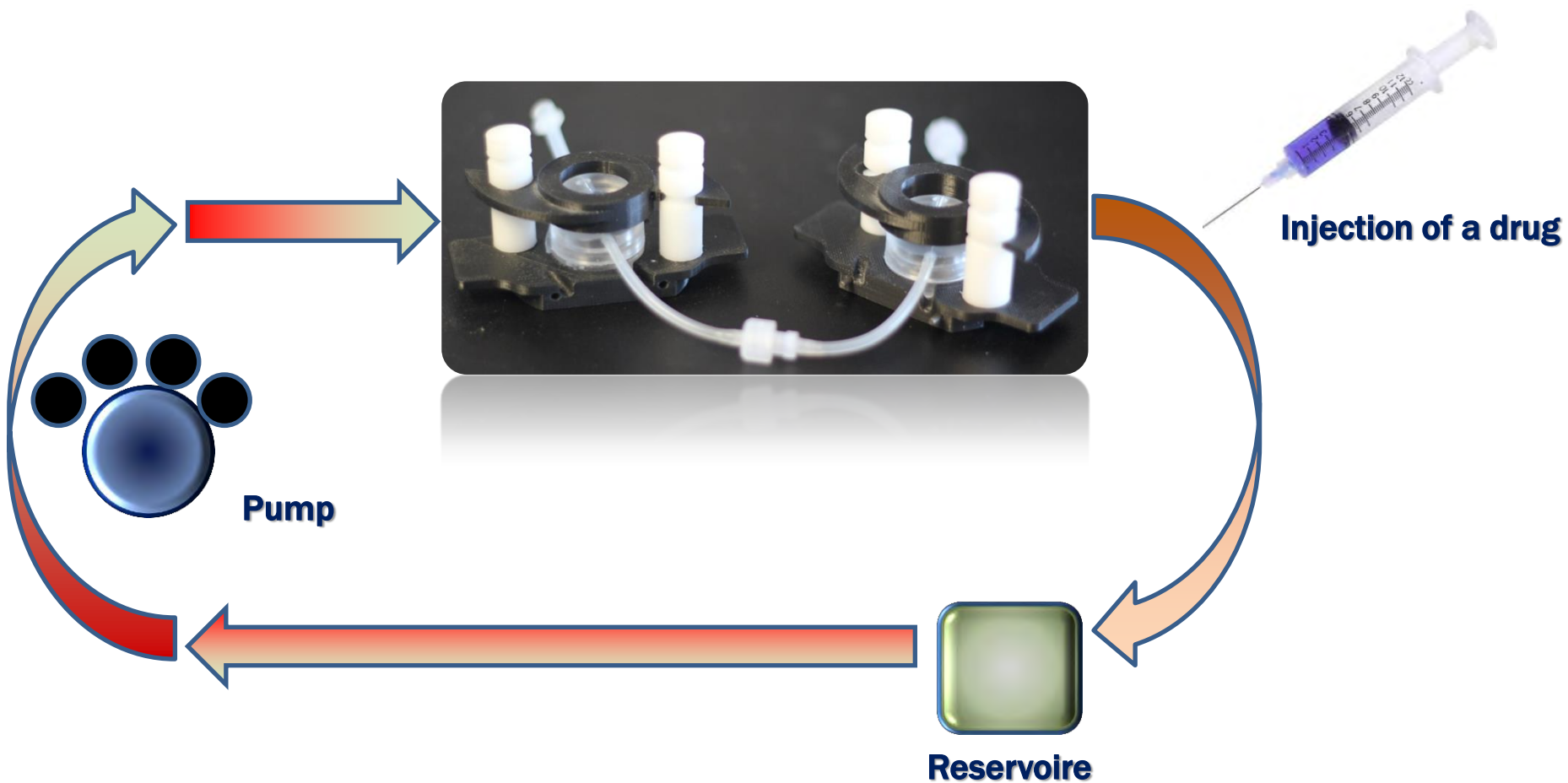


**MultiDyn**

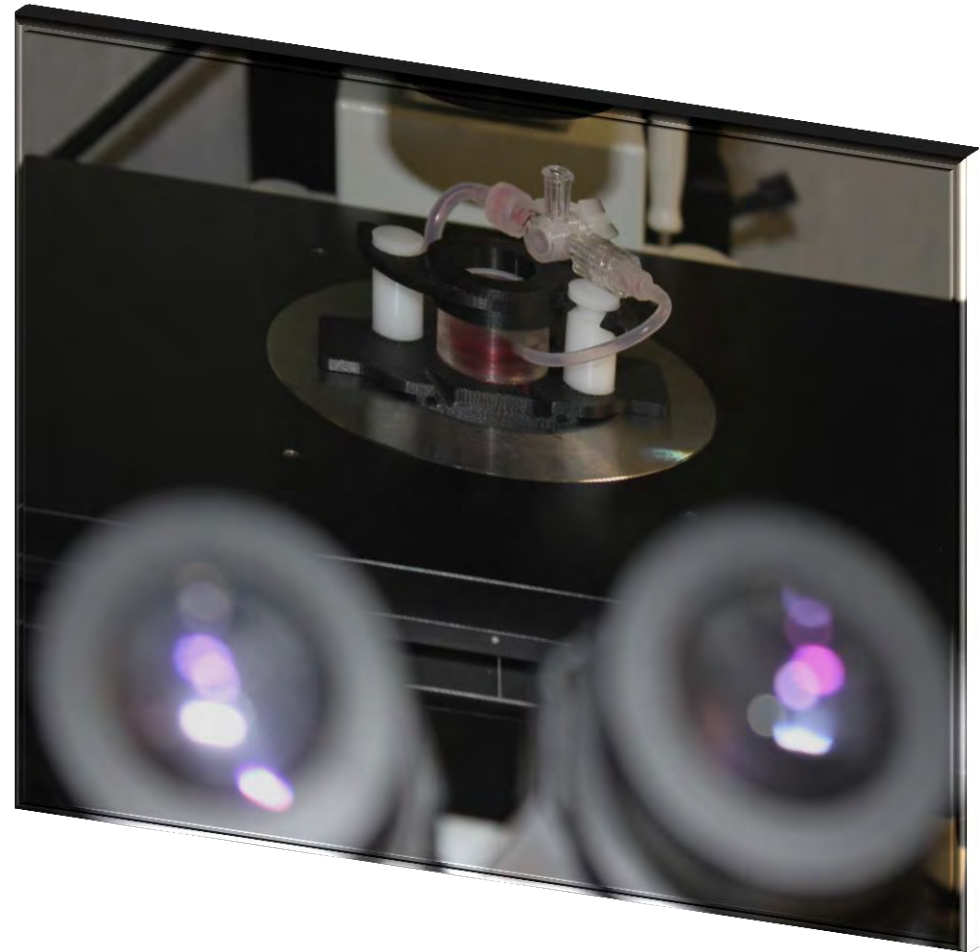
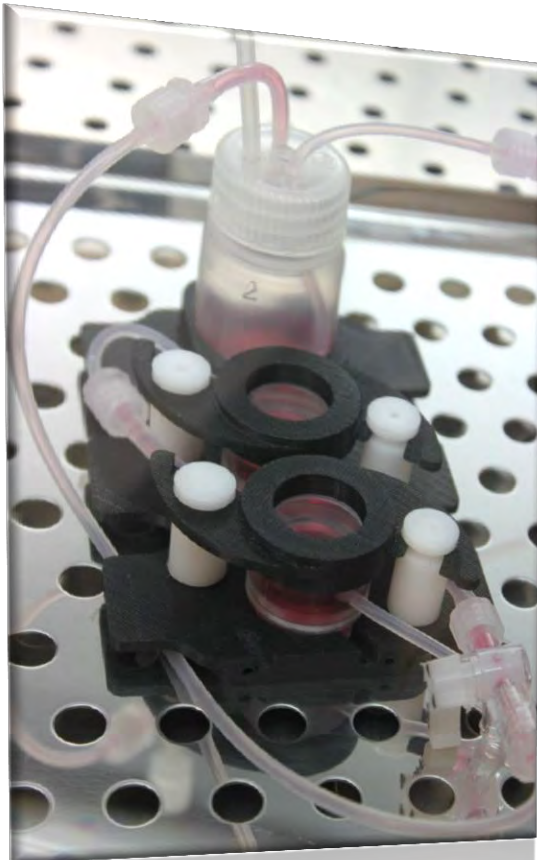


**3D Scaffolds  
colonized with cells**

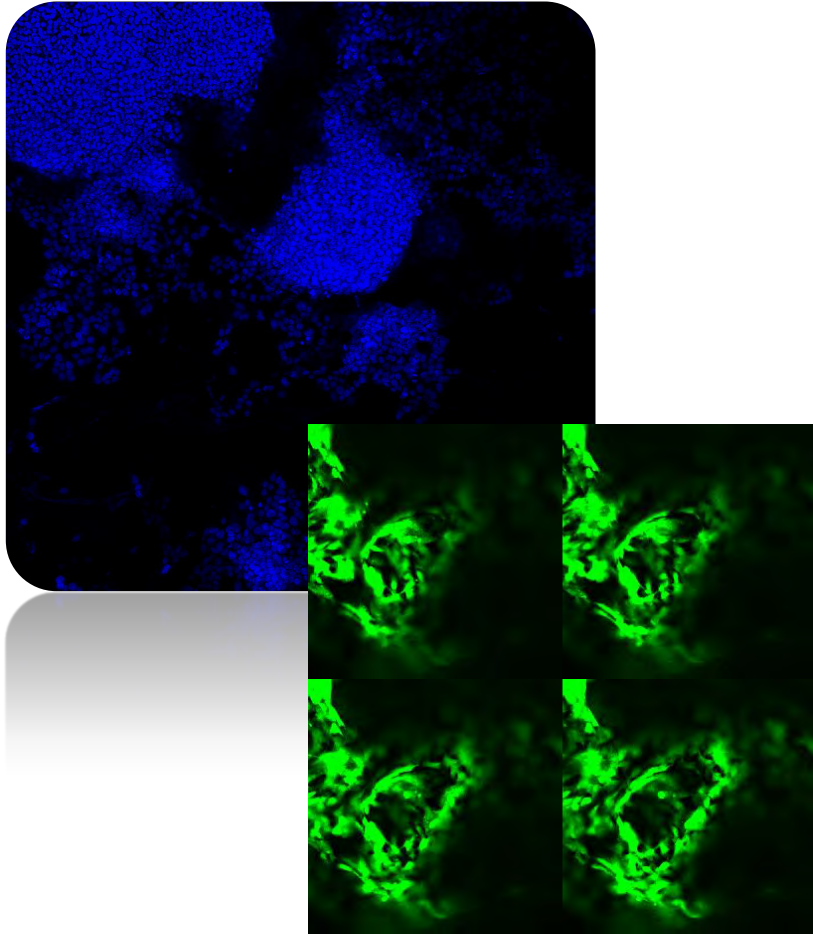




## Modularity

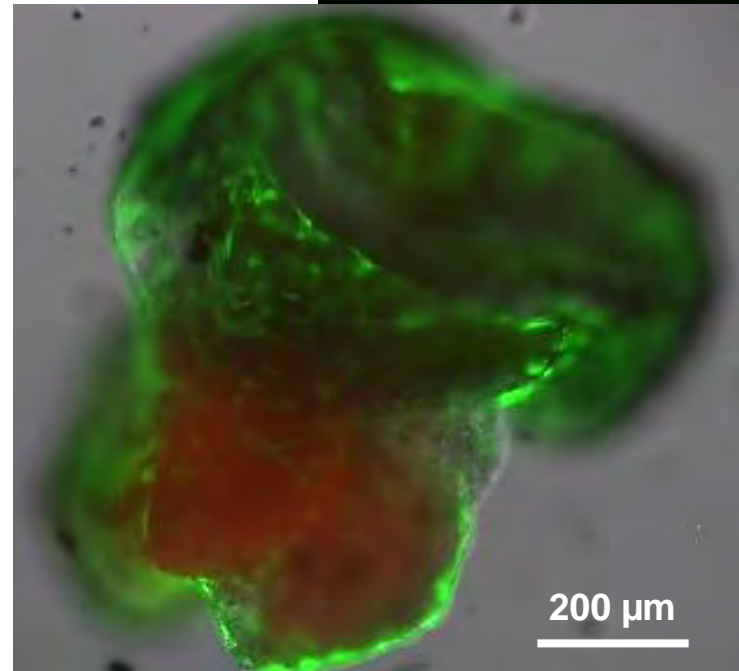
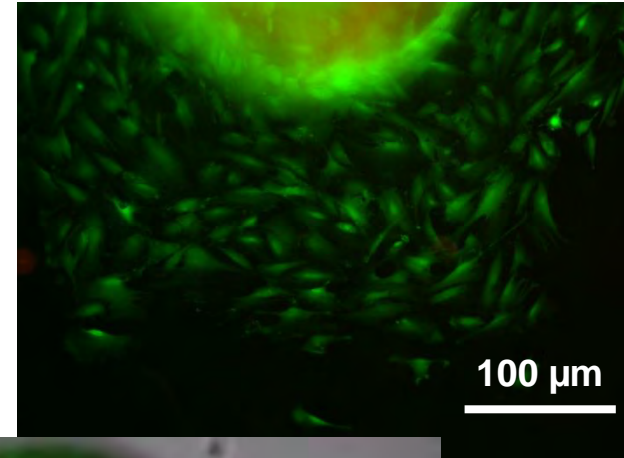


## Real time imaging



DAPI and calcein staining (10X) of a 3D culture of Hep-G2 in collagen scaffold, 24 h in the LB1

Adult rat decellularized heart matrices seeded iCPC<sup>Sca-1</sup>, 10 days in the LB1



10x  
Z-stack

**First place at Arscentia 2012-13 (MultiDyn)**

**Third place StartCup Toscana 2012-13**

**Finalist PNI Cube 2013**

**First place Premio Marzotto 2013 “Dall’Idea  
all’Impresa”**



**[Soft incubation at Fondazione Filarete \(MI\)](#)**

**First place in Start Innovation 2014 (special award  
sponsored by Menarini Group)**





**F**IRST IN-VITRO  
ALTERNATIVES WORKSHOP

**21<sup>th</sup> - 23<sup>th</sup> July 2014**

**Cell culture laboratories, Institute of Clinical  
Physiology, CNR, via Moruzzi 1 Pisa.**

**Registration deadline: 10 July 2014**

**[info@ivtech.it](mailto:info@ivtech.it)  
[www.ivtech.it](http://www.ivtech.it)**